



Government of India
Ministry of Earth Sciences
India Meteorological Department



Press Release
Date: 23rd January 2026
Time of Issue: 1415 hours IST

Subject: (i) Due to a well marked low pressure area, light to moderate widespread rainfall/snowfall with heavy to very heavy falls at isolated places likely over Western Himalayan region; light to moderate fairly widespread rainfall also likely over the plains of northwest India on today 23rd January, 2026. Isolated hailstorm, lightning & gusty winds likely also likely over these areas on today. Weather is likely to improve significantly from tomorrow, the 24th January, 2026.

(ii) Another intense Western Disturbance likely to affect northwest India from 26th to 28th and cause isolated heavy rainfall/snowfall over Western Himalayan region on 27th January, 2026.

(iii) Fall in minimum temperatures by 3-5°C likely over plains Northwest India including Delhi during next 24 hours.

Realised weather during past 24 hours ending at 0830 hours IST of today, the 23rd January, 2026:

- ❖ **Light to moderate rainfall/snowfall occurred at most places** over Jammu-Kashmir-Ladakh, Himachal Pradesh and at isolated places over Uttarakhand with **Heavy Rainfall** at isolated places over Jammu-Kashmir.
- ❖ **Light to moderate rainfall occurred at most places** over Punjab, Haryana, Chandigarh & Delhi, and **at isolated places** over Rajasthan and West Uttar Pradesh.
- ❖ Isolated **hailstorm** activity has been recorded over Jammu, Punjab and East Rajasthan.
- ❖ **Thunderstorm accompanied with Squally/Gusty winds** with speed **60-90 kmph** prevailed at isolated places over Jammu-Kashmir, Himachal Pradesh, Punjab and **30-60 kmph** over Haryana, Chandigarh, Delhi and Uttarakhand.
- ❖ **Dense fog (visibility 50-199 m) conditions** prevailed in isolated pockets of Meghalaya.
- ❖ **Visibility reported (in meters ≤200 m): Meghalaya:** Barapani 50m.

Temperature Conditions during past 24 hours till 0830 hours IST of today:

- ❖ **Minimum temperatures** were **1-4°C** at isolated places over Himachal Pradesh & Uttarakhand; **5°-9°C** at many places over Uttar Pradesh; at isolated places over Rajasthan, north Madhya Pradesh, Bihar, Jharkhand, Chhattisgarh and Meghalaya. It is 10°C and above for remaining parts of the country, except higher reaches of Western Himalayan region where it was less than 0°C.
- ❖ **Minimum Temperatures** were above normal by (2°C to 5°C) over Jammu-Kashmir, Himachal Pradesh, Uttar Pradesh, Central India and adjoining western India, Bihar, Gangetic West Bengal, Assam & Meghalaya, Arunachal Pradesh and below normal by (-2°C to -4°C) over Jharkhand, Chhattisgarh, Telangana, Karnataka, Kerala & Mahe, Tamil Nadu and near normal over rest parts of the country. (**refer to ANNEXURE IV**)
- ❖ **Minimum Temperatures have shown rising tendency** by 3-8°C over Punjab, Haryana, Chandigarh, Delhi, West Uttar Pradesh, East Rajasthan, Madhya Pradesh, 2-5°C over Western Himalayan Region.
- ❖ The **lowest minimum temperature** of 4.4 °C was observed at Ludhiana (**Punjab**) over the plains of India.

Weather Systems, Forecast and Warnings (refer to ANNEXURE I & II):

- ❖ The well marked low pressure area over north Pakistan. The associated cyclonic circulation extends upto upper tropospheric levels tilting northwestwards with height.
- ❖ The trough runs from cyclonic circulation associated with the above well marked low pressure area to northeast Arabian sea between in lower & middle tropospheric levels.
- ❖ A **trough** in easterlies runs roughly along Long. 85°E to the south of Lat. 10°N in lower tropospheric levels.
- ❖ An upper air **cyclonic circulation** lies over South Interior Karnataka in lower tropospheric levels.
- ❖ A fresh western disturbance is likely to affect northwest India from 26th January 2026.

Under the influence of above system, the following weather is likely:

- ❖ Fairly widespread to widespread rainfall/snowfall with **lightning & gusty winds speed reaching 40-50 kmph gusting to 60 kmph** over Jammu-Kashmir-Ladakh, Himachal Pradesh and Uttarakhand on 23rd January with **reduction to isolated to scattered light to moderate rainfall/snowfall on 24th & 25th. Isolated heavy rainfall/snowfall likely over Himachal Pradesh and Uttarakhand and isolated heavy to very heavy rainfall over Jammu-Kashmir on 23rd January.**
- ❖ Widespread light to moderate scattered rainfall **lightning & gusty winds speed reaching 40-50 kmph gusting to 60 kmph** over Punjab, Haryana, Chandigarh, north Rajasthan, north Uttar Pradesh on 23rd with **isolated heavy rainfall over Punjab and Haryana on 23rd January.**
- ❖ Isolated **Hailstorm** activity also likely over Jammu-Kashmir, Himachal Pradesh, Uttarakhand, Punjab, Haryana, Northwest Uttar Pradesh on 23rd January.
- ❖ A fresh wet spell with Fairly widespread to widespread rainfall/snowfall over Jammu-Kashmir-Ladakh, Himachal Pradesh and Uttarakhand on 27th and scattered rainfall/snowfall on 28th January. **Isolated heavy rainfall/snowfall also likely over Jammu-Kashmir and Himachal Pradesh 27th January and isolated to scattered** light to moderate scattered rainfall over adjoining plains of northwest India during the same period.
- ❖ **Thunderstorm activity accompanied with lightning** also likely over Tamil Nadu, Puducherry & Karaikal on 23rd and over Kerala & Mahe on 26th **with isolated heavy rain** likely over Tamil Nadu, Puducherry & Karaikal on 23rd January.

Forecast of minimum temperatures:

- ❖ Fall in minimum temperatures by 3-5°C over Northwest India during next 24 hours; no significant change during next 2 days and gradual rise by 2-4°C during subsequent 3 days.
- ❖ Gradual fall in minimum temperatures by 2-4°C over Central India during next 3 days and gradual rise by 2-3°C during subsequent 4 days.
- ❖ Gradual fall in minimum temperatures by 2-3°C over Maharashtra during next 48 hours; gradual rise by 2-3°C during subsequent 3 days and no significant change thereafter.
- ❖ Gradual fall in minimum temperatures by 2-3°C over Gujarat during next 24 hours; gradual rise by 2-4°C during subsequent 3 days and no significant change thereafter.
- ❖ No significant change in minimum temperatures likely over rest parts of the country.

Dense Fog & Cold wave Warnings:

- ❖ **Dense to very dense fog** conditions likely during morning/ night hours in some/isolated pockets over Punjab and Haryana & Chandigarh during 24th-26th **and dense fog conditions** at isolated places on 23rd January.
- ❖ **Dense fog** conditions also likely during morning/night hours in isolated pockets over Himachal Pradesh during 24th-26th; Rajasthan, Madhya Pradesh till 25th; Sub-Himalayan West Bengal & Sikkim till 26th January.
- ❖ **Cold wave** conditions likely in isolated pockets over Himachal Pradesh on 25th & 26th January.

Fisherman Warning:

Fishermen are advised not to venture into the following areas during 23rd January to 28th January, 2026:

- **Bay of Bengal:** Over some parts of southwest, southeast & adjoining few parts of westcentral Bay of Bengal during 23rd to 25th January; over southwest Bay of Bengal on 25th January.
- **Arabian Sea:** Over north Arabian Sea, along and off north Gujarat & Oman coasts, some parts of west central and southwest Arabian Sea, along and off Somalia coast during 23rd to 25th January.

Weather conditions and forecast over Delhi/NCR during 23rd -26th January, 2026 (ANNEXURE III) For more details, kindly refer National Weather Bulletin:

https://mausam.imd.gov.in/responsive/all_india_forecast_bulletin.php

For District wise warnings refer: <https://mausam.imd.gov.in/responsive/districtWiseWarningGIS.php>

For Fishermen warning refer <https://rsmcnewdelhi.imd.gov.in/fishermen-warning.php>

Significant rainfall recorded (in cm) (from 0830 hours IST of yesterday to 0830 hours IST of today):

- ❖ **Jammu-Kashmir:** Reasi Arg (dist Reasi) 9, Reasi Kvk Aws (dist Reasi) 8, Katra (dist Reasi) 8, Udhampur(iaf) (dist Udhampur) 8, Jammu Aws (dist Jammu) 8, Poonch (dist Poonch) 7, Jammu (dist Jammu) 7.

Snow depth recorded (in cm) during past 24 hours ending at 0830 hrs IST of January 23rd, 2026:

- ❖ **Kashmir division:** Gulmarg 46.0; Kupwara 27.0; Pahalgam 18.0; Kukernag 17.0; Qazi Gund 5.0;
- ❖ **Jammu division:** Banihal 14.0; Batote 6.5; Bhadarwah 5.5;
- ❖ **Himachal Pradesh:** Kothi 15.0, Gondla 12.0, Kukumseri 6.8, Jot 6.0, Manali 4.8, Keylong 4.0, Kufri 4.0, Bharmaur 4.0, Shimla 0.6

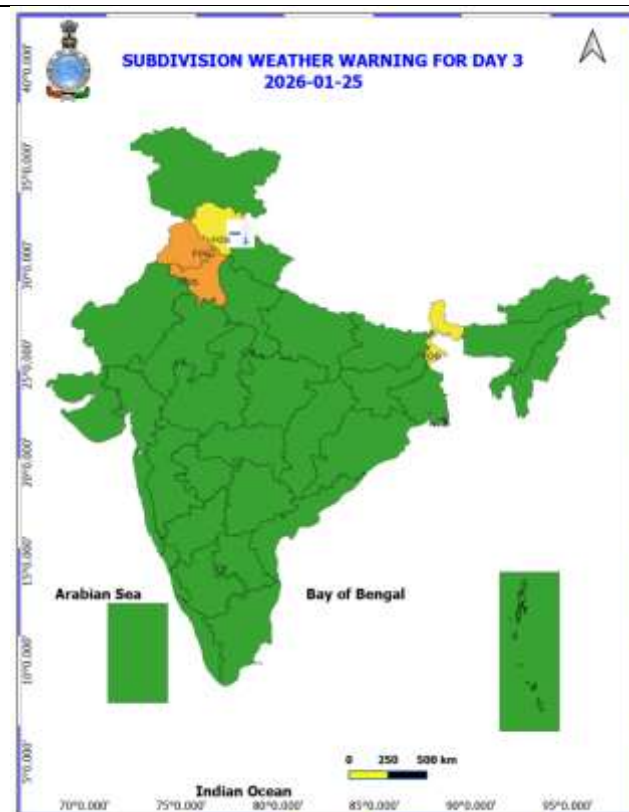
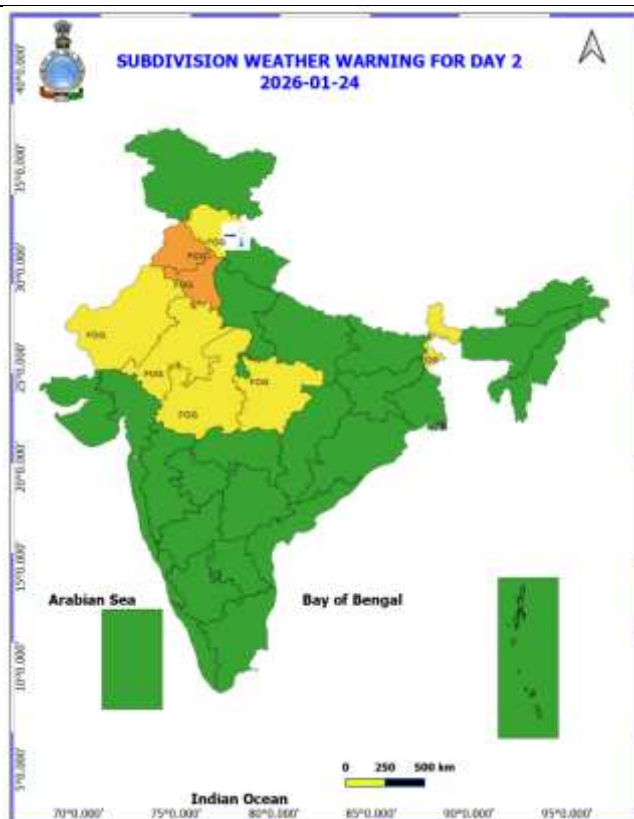
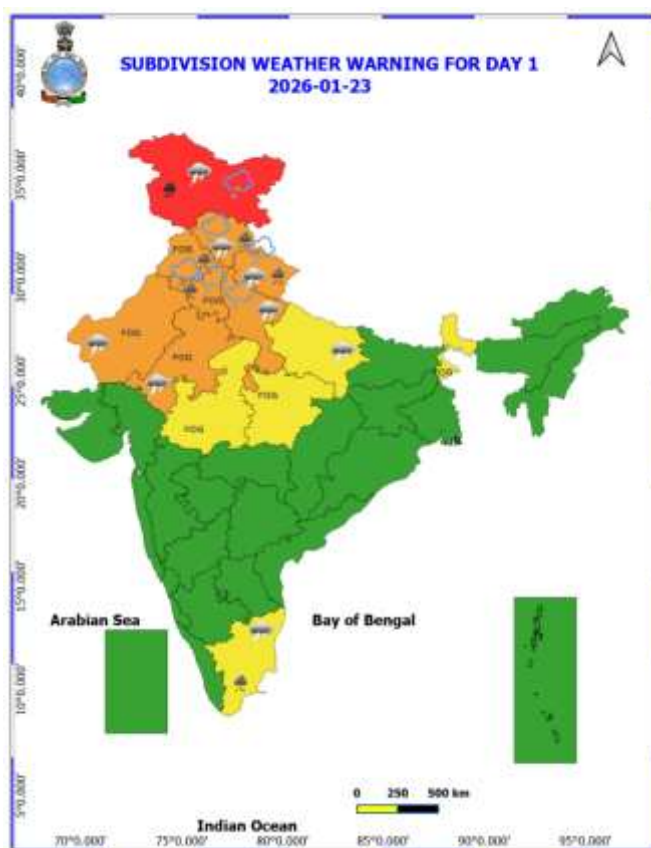
Realised Gusty wind since last 24 hours (till 0830 hrs IST) (in kmph)

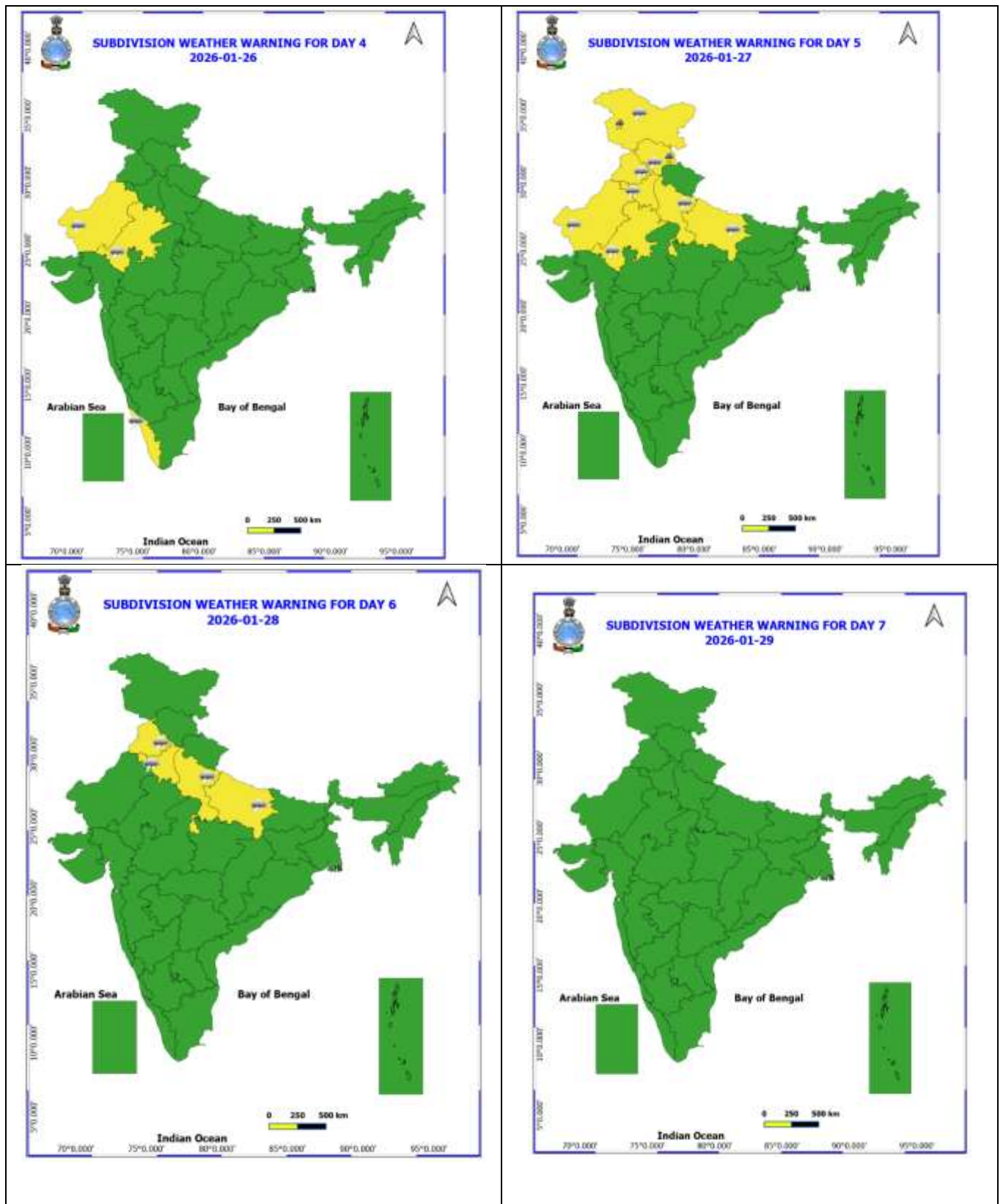
- ❖ **Himachal Pradesh:** Narkanda-87, Kufri-67, Seobagh-65, Mashobra59, Neri-54;
- ❖ **Jammu-Kashmir:** Srinagar 84;
- ❖ **Punjab:** Hoshiarpur 61; Sangrur 50; Mansa 39; Rupnagar 39; Pathankot 37; Faridkot 37; Ferozepur 37; Fazilka 33;
- ❖ **Uttarakhand:** Ranichauri (Aws) 44;
- ❖ **Haryana, Chandigarh:** Chandigarh 39; Panipat 39; Rohtak 35; Karnal 33

ANNEXURE I

Table-1								
7 Days Rainfall Forecast								
S.No.	Subdivision	23- Jan	24- Jan	25- Jan	26- Jan	27- Jan	28- Jan	29- Jan
		Day 1	Day 2	Day 3	Day 4	Day 5	Day 6	Day 7
1	ANDAMAN & NICOBAR ISLANDS	ISOL	ISOL	ISOL	ISOL	ISOL	ISOL	ISOL
2	ARUNACHAL PRADESH	DRY	ISOL	ISOL	ISOL	DRY	ISOL	ISOL
3	ASSAM & MEHGHALAYA	DRY	DRY	DRY	DRY	DRY	DRY	DRY
4	NAGALAND, MANIPUR, MIZORAM AND TRIPURA	DRY	DRY	DRY	DRY	DRY	DRY	DRY
5	SUB HIMALAYAN WEST BENGAL & SIKKIM	ISOL	ISOL	ISOL	DRY	DRY	ISOL	ISOL
6	GANGETIC WEST BENGAL	DRY	DRY	DRY	DRY	DRY	DRY	DRY
7	ODISHA	DRY	DRY	DRY	DRY	DRY	DRY	DRY
8	JHARKHAND	DRY	DRY	DRY	DRY	DRY	DRY	DRY
9	BIHAR	DRY	DRY	DRY	DRY	DRY	DRY	ISOL
10	EAST UTTAR PRADESH	ISOL	ISOL	DRY	DRY	ISOL	ISOL	DRY
11	WEST UTTAR PRADESH	SCT	DRY	DRY	DRY	SCT	SCT	DRY
12	UTTARAKHAND	WS	ISOL	ISOL	ISOL	SCT	FWS	ISOL
13	HARYANA, CHANDIGARH & DELHI	WS	ISOL	DRY	ISOL	WS	SCT	DRY
14	PUNJAB	WS	ISOL	DRY	ISOL	WS	SCT	DRY
15	HIMACHAL PRADESH	WS	ISOL	ISOL	SCT	WS	SCT	DRY
16	JAMMU AND KASHMIR AND LADAKH	WS	ISOL	ISOL	FWS	WS	SCT	ISOL
17	WEST RAJASTHAN	ISOL	DRY	DRY	ISOL	ISOL	DRY	DRY
18	EAST RAJASTHAN	ISOL	DRY	DRY	ISOL	SCT	ISOL	DRY
19	WEST MADHYA PRADESH	ISOL	DRY	DRY	DRY	ISOL	ISOL	DRY
20	EAST MADHYA PRADESH	ISOL	DRY	DRY	DRY	ISOL	ISOL	DRY
21	GUJRAT REGION	DRY	DRY	DRY	DRY	DRY	DRY	DRY
22	SAURASHTRA & KUTCH	DRY	DRY	DRY	DRY	DRY	DRY	DRY
23	KONKAN & GOA	DRY	DRY	DRY	DRY	DRY	DRY	DRY
24	MADHYA MAHARASHTRA	DRY	DRY	DRY	DRY	DRY	DRY	DRY
25	MARATHWADA	DRY	DRY	DRY	DRY	DRY	DRY	DRY
26	VIDARBHA	DRY	DRY	DRY	DRY	DRY	DRY	DRY
27	CHHATTISGARH	DRY	DRY	DRY	DRY	DRY	DRY	DRY
28	COASTAL ANDHRA PRADESH	DRY	DRY	DRY	DRY	DRY	DRY	DRY
29	TELANGANA	DRY	DRY	DRY	DRY	DRY	DRY	DRY
30	RAYALASEEMA	DRY	DRY	DRY	DRY	DRY	DRY	DRY
31	TAMILNADU & PUDUCHERRY	ISOL	ISOL	SCT	ISOL	DRY	DRY	DRY
32	COSTAL KARNATAKA	DRY	DRY	DRY	DRY	DRY	DRY	DRY
33	NORTH INTERIOR KARNATAKA	DRY	DRY	DRY	DRY	DRY	DRY	DRY
34	SOUTH INTERIOR KARNATAKA	DRY	DRY	DRY	DRY	DRY	DRY	DRY
35	KERALA AND MAHE	DRY	ISOL	ISOL	SCT	ISOL	DRY	DRY
36	LAKSHADWEEP	DRY	DRY	DRY	SCT	SCT	DRY	DRY

- As the lead period increases forecast accuracy decrease.





- Action may be taken based on ORANGE AND REDCOLOUR warnings.
- Vulnerable regions likely urban and hilly areas action may be initiated for heavy rainfall warning.
- As the lead period increases forecast accuracy decreases.

Detailed districtwise Multi Hazard weather warning for next five days available at
<https://mausam.imd.gov.in/responsive/districtWiseWarningGIS.php>

Weather forecast over Delhi/NCR during 23rd to 26th January 2026

Past Weather:

There has been a markedly rise in minimum temperature by 05-07°C and rise in maximum temperatures by 1-3°C during the past 24 hours over Delhi. The maximum and minimum temperatures over Delhi were around 25°C to 27°C and 13°C to 14°C, respectively. The minimum temperatures are appreciably above normal (3.1 to 5.0°C) at isolated places and markedly above normal (5.1°C or more) over the remaining parts of Delhi. The maximum temperatures were markedly above normal (5.1°C or more) at many places and at a appreciably above normal (3.1 to 5.0°C) at a few places of Delhi. Safdarjung reported lowest visibility 600m at 1000 IST of today, 23.01.2026. Palam reported lowest visibility 1000m from 0830 to 1000 IST of today, 23.01.2026. Mainly clear sky with moderate to dense fog, predominant surface wind from the southeasterly direction with a wind speed up to 18kmph reaching 37 kmph in Gust prevailed during the past 24 hours. Generally cloudy sky with very light rain to light rain accompanied with thunderstorm/lightning and gusty winds speed reaching 30-40 kmph from the southeast direction prevailed over the region in the forenoon today.

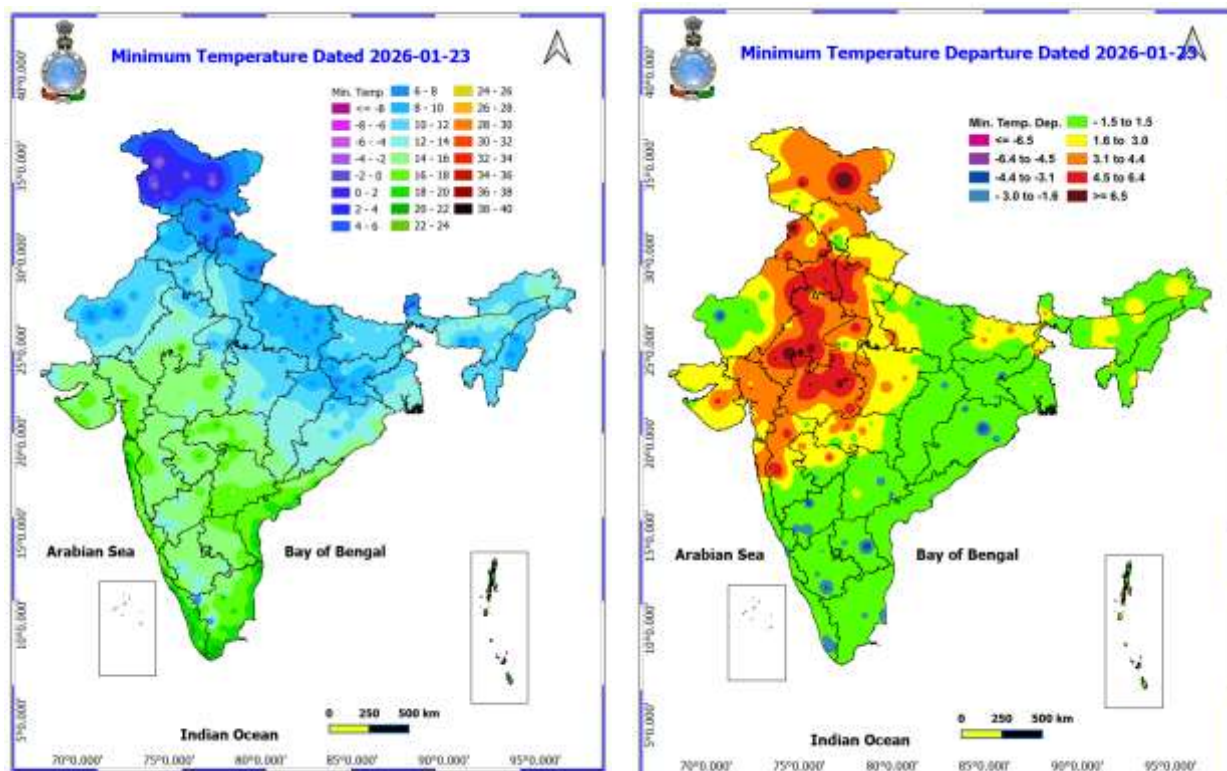
Weather Forecast:

23.01.2026: Generally cloudy sky. A spell of very light rain during afternoon/ evening. The maximum temperatures are likely to be in the range of 15°C to 17°C. Maximum temperatures will be below normal (3°C to 4°C) over Delhi. The predominant surface wind is likely to be from the southeast direction with wind speeds less than 20kmph during the afternoon hours. The wind speed will decrease up to 10 kmph from the northeast direction during the evening and night. Mist/ Shallow fog during night.

24.01.2026: Generally cloudy sky. Shallow to moderate fog during morning hours. The maximum and minimum temperatures in Delhi are likely to be in the ranges of 16°C to 18°C and 06°C to 08°C, respectively. The minimum temperature will be near normal and the maximum temperatures will be below normal (2.3°C to 4.3°C) over Delhi. The predominant surface wind is likely to be from the north direction with wind speed less than 10kmph during the morning hours. The wind speed will increase up to 15kmph from the northwest direction in the afternoon hours. The wind speed will remain same up to 15kmph from the northwest direction during evening and night.

25.01.2025: Partly cloudy sky. Shallow to moderate fog during morning hours. The maximum and minimum temperatures in Delhi are likely to be in the ranges of 17°C to 19°C and 06°C to 08°C, respectively. The minimum temperatures will be near normal and the maximum temperatures will be below normal (1.3°C to 3.3°C) over Delhi. The predominant surface wind is likely to be from the northwest direction with wind speeds less than 15kmph during the morning hours. The wind speed will remain same up to 15kmph from the northwest direction in the afternoon. The wind speed will decrease up to 10kmph from northwest direction during the evening/night.

26.01.2026: Partly cloudy sky. Shallow to moderate fog during morning hours. The maximum and minimum temperatures in Delhi are likely to be in the ranges of 18°C to 20°C and 06°C to 08°C, respectively. The minimum temperatures will be below normal (0.4°C to 2.4°C) and the maximum temperatures will be below normal (2.1°C to 4.1°C) over Delhi. The predominant surface wind is likely to be from the northwest direction with wind speeds up to 10kmph during the morning hours. The wind speed will remain same up to 10kmph from the northwest direction in the afternoon and wind speed will remain same up to 10kmph from the northeast direction during the evening/night.



Impact expected and action suggested due to isolated thunderstorm with lightning/gusty winds & Hailstorm over

- ✓ **Hailstorm** activity also likely over Jammu-Kashmir, Himachal Pradesh, Uttarakhand, Punjab, Haryana, West Uttar Pradesh on 23rd January.
- ✓ **Thunderstorm with lightning & winds speed reaching 40-50 kmph gusting to 60 kmph** likely over Jammu-Kashmir-Ladakh-Gilgit-Baltistan-Muzaffarabad, Himachal Pradesh, Uttarakhand on 23rd & 27th; Punjab, Haryana, Chandigarh, West Uttar Pradesh, East Rajasthan on 23rd January.

Impact expected:

- Breaking of tree branches, uprooting of large avenue trees. Large dead limbs blown from trees. Damage to Standing crops.
- Minor to Major damage to banana and papaya trees.
- Minor to major damage to power and communication lines due to breaking of branches.
- Strong wind/hail may damage plantation, horticulture and standing crops.
- Hail may injure people and cattle at open places.
- Partial damage to vulnerable structures due to strong winds.
- Minor damage to kutchha houses/walls and huts.
- Loose objects may fly.

Action suggested:

- People are advised to keep a watch on the weather for worsening conditions and be ready to move to safer places accordingly.
- Stay indoors, close windows & doors and avoid travel if possible.
- Take safe shelters; do not take shelter under trees.
- Do not lie on concrete floors and do not lean against concrete walls.
- Unplug electrical/ electronic appliances.
- Immediately get out of water bodies.
- Keep away from all the objects that conduct electricity.

Impact & Action Suggested due to

- ❖ Isolated **very heavy rainfall** over Jammu-Kashmir on 23rd January.

Impact Expected

- Localized Flooding of roads, water logging in low lying areas and closure of underpasses mainly in urban areas of the above region.
- Occasional reduction in visibility due to heavy rainfall.
- Disruption of traffic in major cities due to water logging in roads leading to increased travel time.
- Minor damage to kutchha roads.
- Possibilities of damage to vulnerable structure.
- Localized Landslides/Mudslides/landslips/mudslips/landsinks/mudsinks.
- Damage to horticulture and standing crops in some areas due to inundation.
- It may lead to riverine flooding in some river catchments (for riverine flooding please visit Web page of CWC)

Action Suggested

- Check for traffic congestion on your route before leaving for your destination.
- Follow any traffic advisories that are issued in this regard.
- Avoid going to areas that face the water logging problems often.
- Avoid staying in vulnerable structure.

Impact expected due to dense/very dense fog in the morning hours:

- ❖ **Dense to very dense fog** conditions likely during morning/ night hours in some/isolated pockets over Punjab and Haryana & Chandigarh during 24th-26th **and dense fog conditions** at isolated places on 23rd January.
- ❖ **Dense fog** conditions also likely during morning/night hours in isolated pockets over Himachal Pradesh during 24th-26th; Rajasthan, Madhya Pradesh till 25th; Sub-Himalayan West Bengal & Sikkim till 26th January.

❖ Transport and Aviation:

- May affect some airports, highways and railway routes in the areas of met- sub-division.
- Difficult driving conditions with slower journey times.
- Unless taken precautionary measures, it may lead to some road traffic collisions.

❖ Power Sector:

- Chances of Tripping of Power lines in the very dense fog routes.

❖ Human Health:

- Lung related health impacts: Dense fog contains particulate matter and other pollutants and in case exposed it gets lodged in the lungs, clogging them and decreasing their functional capacity which increases episodes of wheezing, coughing and shortness of breath.
- Impact on people having asthma bronchitis: Long time exposure to dense fog may cause respiratory problem for people having asthma bronchitis and other lung related health problems.
- Eye Irritation: Dense fog contains pollutions of various types and these Pollutants in the air if exposed may tend to irritate the membranes of the eye causing various infections leading to redness or swelling of the eye.

Agromet advisories for likely impact of Heavy Rainfall/ Snowfall

- In **Jammu & Kashmir**, make necessary arrangement to drain out excess water from wheat, mustard, chickpea, pea and vegetables fields. Gently shake the trees to remove snow immediately from the branches.
- In **Himachal Pradesh**, make necessary arrangements to drain out excess rainwater from the standing crops, vegetable fields and fruit orchards.
- In **Uttarakhand**, make necessary arrangements to drain excess water from standing crop fields and vegetables.
- In **North Punjab**, make necessary arrangements to drain out excess rainwater from the standing crops such as wheat, mustard, sugarcane, orchards and vegetable crops.

Agromet advisories for likely impact of Hailstorm

- Use hail nets to protect orchards and vegetable plants in Jammu & Kashmir, Himachal Pradesh, Uttarakhand, Punjab, Haryana, West Uttar Pradesh and East Rajasthan.

Livestock

- Keep the animals inside the shed during heavy rainfall and hailstorm period and provide them balanced feed. Store feed and fodder in a safe place to prevent spoilage.

Agromet advisories for likely impact of Cold Waves / Low Temperatures

- In **Himachal Pradesh**, apply light and frequent irrigation to the standing crops in the evening hours to protect crops from low temperature stress or cold injury. Use mulching and cover the vegetable nurseries and young fruit plants with straw / polythene sheets to maintain optimum soil temperature.

Agromet advisories for likely impact of Thunderstorm / Gusty Winds

- Provide mechanical support to horticultural crops and staking or support to vegetables and young fruit plants / fruit-bearing plants to avoid lodging due to strong winds.

Legends & abbreviations:

- ❖ **Heavy Rain:**64.5-115.5mm; **Very Heavy Rain:**115.6-204.4mm; **Extremely Heavy Rain:** >204.4mm.
- ❖ **Obsy:** Observatory; Automatic Weather Station; **ARG:** Automatic Rain Gauge; **dist:** District; **NH:** National Highway; **KVK:** Krishi Vigyan Kendra; **DVC:** Damodar Valley Corporation; **PTO:** Part Time Office, **Aero:** Aerodrome, **IAF:** Indian Air Force.
- ❖ **Region wise classification of meteorological Sub-Divisions:**
 - **Northwest India:** Western Himalayan Region (Jammu-Kashmir-Ladakh-Gilgit-Baltistan-Muzaffarabad, Himachal Pradesh and Uttarakhand); Punjab, Haryana-Chandigarh-Delhi; West Uttar Pradesh, East Uttar Pradesh, West Rajasthan and East Rajasthan.
 - **Central India:** West Madhya Pradesh, East Madhya Pradesh, Vidarbha and Chhattisgarh.
 - **East India:** Bihar, Jharkhand, Sub-Himalayan West Bengal & Sikkim; Gangetic West Bengal, Odisha and Andaman & Nicobar Islands.
 - **Northeast India:** Arunachal Pradesh, Assam & Meghalaya and Nagaland, Manipur, Mizoram & Tripura.
 - **West India:** Gujarat Region, Saurashtra & Kutch, Konkan & Goa, Madhya Maharashtra and Marathawada.
 - **South India:** Coastal Andhra Pradesh & Yanam, Telangana, Rayalaseema, Coastal Karnataka, North Interior Karnataka, South Interior Karnataka, Kerala & Mahe, Tamil Nadu, Puducherry & Karaikal and Lakshadweep.

LEGENDS

1. अंडमान और निकोबार द्वीपसमूह

2. अरुणाचल प्रदेश

3. असम और मेघालय

4. नागालैंड, मणिपुर, मिजोरम और त्रिपुरा

5. उप-हिमालयी पश्चिम बंगाल और सिक्किम

6. गंगीय पश्चिम बंगाल

7. ओडिशा

8. झारखंड

9. बिहार

10. पूर्वी उत्तर प्रदेश

11. पश्चिम उत्तर प्रदेश

12. उत्तराखंड

13. हरियाणा, चंडीगढ़ और दिल्ली

14. पंजाब

15. हिमाचल प्रदेश

16. जम्मू और कश्मीर और लद्दाख

17. पश्चिम राजस्थान

18. पूर्वी राजस्थान

19. पश्चिम मध्य प्रदेश

20. पूर्वी मध्य प्रदेश

21. गुजरात

22. सौराष्ट्र

23. कोंकण और गोवा

24. मध्य महाराष्ट्र

25. मराठवाड़ा

26. विदर्भ

27. छत्तीसगढ़

28. तटीय आंध्र प्रदेश और यनम

29. तेलंगाना

30. रायलसीमा

31. तमिलनाडु, पुडुचेरी और कराईकल

32. तटीय कर्नाटक

33. आंतरिक उत्तरी कर्नाटक

34. आंतरिक दक्षिणी कर्नाटक

35. केरल और माहे

36. लक्षद्वीप



1. Andaman & Nicobar Islands

2. Arunachal Pradesh

3. Assam & Meghalaya

4. Nagaland, Manipur, Mizoram & Tripura

5. Sub-Himalayan West Bengal & Sikkim

6. Gangetic West Bengal

7. Odisha

8. Jharkhand

9. Bihar

10. East Uttar Pradesh

11. West Uttar Pradesh

12. Uttarakhand

13. Haryana, Chandigarh & Delhi

14. Punjab

15. Himachal Pradesh

16. Jammu & Kashmir and Ladakh

17. West Rajasthan

18. East Rajasthan

19. West Madhya Pradesh

20. East Madhya Pradesh

21. Gujarat

22. Saurashtra

23. Konkan & Goa

24. Madhya Maharashtra

25. Marathwada

26. Vidarbha

27. Chhattisgarh

28. Coastal Andhra Pradesh & Yanam

29. Telangana

30. Rayalaseema

31. Tamilnadu, Puducherry & Karaikal

32. Coastal Karnataka

33. North Interior Karnataka

34. South Interior Karnataka

35. Kerala & Mahe

36. Lakshadweep

SPATIAL DISTRIBUTION (% of Stations reporting)

% Stations	Category	% Stations	Category
76-100	Widespread (WS/Most Places)	26-50	Scattered (SCT/A Few Places)
51-75	Fairly Widespread (FWS/Many Places)	1-25	Isolated (ISOL)



Fog



Heavy Snow



Cold Wave



Heavy Rain



Dust Storm



Cold Day



Very Heavy Rain



Heat Wave



Ground Frost



Extremely Heavy Rain



Warm Night



Thunder & Lightning



Hot Day



Hailstorm



Hot & Humid



Dust Raising Winds



Strong Surface Winds

COLOUR CODED WARNING

No Warning (No Action)

Watch (Be Aware)

Alert (Be Prepared To Take Action)

Warning (Take Action)

Probabilistic Forecast

Terms	Probability of Occurrence (%)
Unlikely	< 25
Likely	25 - 50
Very Likely	50 - 75
Most Likely	> 75

* Red colour warning does not mean "Red Alert", Red colour warning means "Take Action".

Forecast and Warning for any day is valid from 0830 hours IST of day till 0830 hours IST of next day.

For more details, kindly visit <https://mausam.imd.gov.in> or contact: 011-2434-4599

(Service to the Nation since 1875)

DEFINITION/CRITERIA

Rain/ Snow *

Heavy: 64.5 to 115.5 mm/cm *
Very Heavy: 115.6 to 204.4 mm/cm *
Extremely Heavy: > 204.4 mm/cm *

Heat Wave

When maximum temperature of a station reaches $\geq 40^{\circ}\text{C}$ for plains and $\geq 30^{\circ}\text{C}$ for hilly regions
(a) Based on Departure from normal

Heat Wave: Maximum Temperature Departure from normal 4.5°C to 6.4°C .

Severe Heat Wave: Maximum Temperature Departure from normal $\geq 6.5^{\circ}\text{C}$

(b). Based on Actual maximum temperature

Heat Wave: When actual maximum temperature $\geq 45^{\circ}\text{C}$.

Severe Heat Wave: When actual maximum temperature $\geq 47^{\circ}\text{C}$.

(c). Criteria for heat wave for coastal stations

When maximum temperature departure is $> 4.5^{\circ}\text{C}$ from normal. Heat Wave may be described provided maximum temperature $\geq 37^{\circ}\text{C}$.

Warm Night

When maximum temperature remains 40°C

Warm Night: When minimum temperature departure 4.5°C to 6.4°C .

Severe Warm Night: When minimum temperature departure $> 6.4^{\circ}\text{C}$.

Cold Wave

When minimum temperature of a station $\leq 10^{\circ}\text{C}$ for plains and $\leq 0^{\circ}\text{C}$ for hilly regions.

(a). Based on departure

Cold Wave: Minimum Temperature Departure from normal -4.5°C to -6.4°C .

Severe Cold Wave: Minimum Temperature Departure from normal $\leq -6.5^{\circ}\text{C}$

(b) Based on actual Minimum Temperature (for Plains only)

Cold Wave: When Minimum Temperature is $\leq 4.0^{\circ}\text{C}$

Severe Cold Wave: When Minimum Temperature is $\leq 2.0^{\circ}\text{C}$

(c) For Coastal Stations

When Minimum Temperature departure is $\leq -4.5^{\circ}\text{C}$ & actual Minimum Temperature is $\leq 15^{\circ}\text{C}$

Cold Day

When minimum temperature of a station $\leq 10^{\circ}\text{C}$ for plains and $\leq 0^{\circ}\text{C}$ for hilly regions

Based on departure

Cold Day: Maximum Temperature Departure from normal -4.5°C to -6.4°C .

Severe Cold Day: Maximum Temperature Departure from normal $\leq -6.5^{\circ}\text{C}$

Fog

Phenomenon of small droplets suspended in air and the horizontal visibility $< 1\text{km}$

Moderate Fog: When the visibility between 500-200 metres

Dense Fog: when the visibility between 50- 200 metres

Very Dense Fog: when the visibility < 50 metres

Thunderstorm

Sudden electrical discharges manifested by a flash of light (Lightning) and a sharp rumbling sound (thunder)

Dust/Sand Storm

An ensemble of particles of dust or sand energetically lifted to great heights by a strong and turbulent wind.

Frost

Ice deposits on ground

Air temperature $\leq 4^{\circ}\text{C}$ (over Plains)

Squall

A strong wind that rises suddenly, lasts for atleast 1 minute.

Moderate: Wind speed 52-61 kmph

Severe: Wind speed 62-67 kmph

Very Severe: Wind speed > 67 kmph

Sea State

Effect of various waves in the sea over specific area

Rough to very rough: Wind speed 41-62 kmph (22-33 knots) & Wave height 2.5-6 metre

High to very high: Wind speed 63-117 kmph (34-63 knots) & Wave height 6-14 metre

Phenomenal: Wind speed > 117 kmph (> 63 knots) & Wave height > 14 metre

Cyclone

Cyclonic Storm: Wind speed 62-87 kmph (34-47 knots)

Severe Cyclonic Storm: Wind speed 88-117 kmph (48-63 knots)

Very Severe Cyclonic Storm: Wind speed 118-165 kmph (64 - 89 knots)

Extremely Severe Cyclonic Storm: Wind speed 166-220 kmph (90 -119 knots)

Super Cyclone Storm: Wind speed > 220 kmph (> 119 knots)

* Red colour warning does not mean "Red Alert", Red colour warning means "Take Action".

Forecast and Warning for any day is valid from 0830 hours IST of day till 0830 hours IST of next day.

For more details, kindly visit <https://mausam.imd.gov.in> or contact: 011-2434-4599

(Service to the Nation since 1875)